

US Stock Express

Daniel Yue

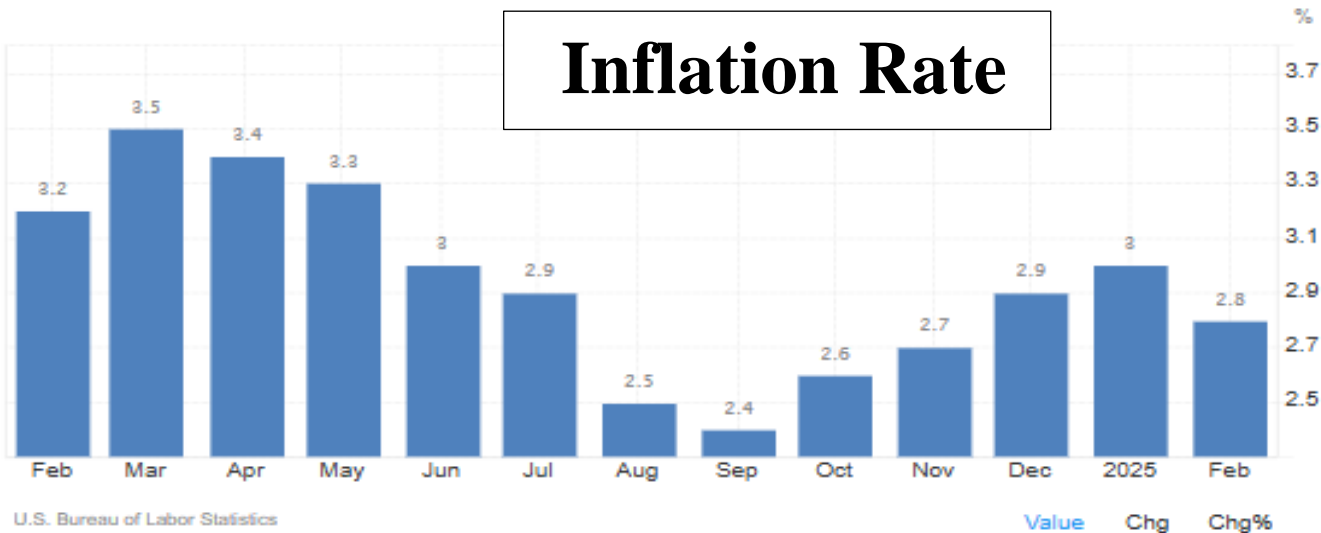
Email: info@ihandbook.org

www.ihandbook.org

©



Inflation Rate



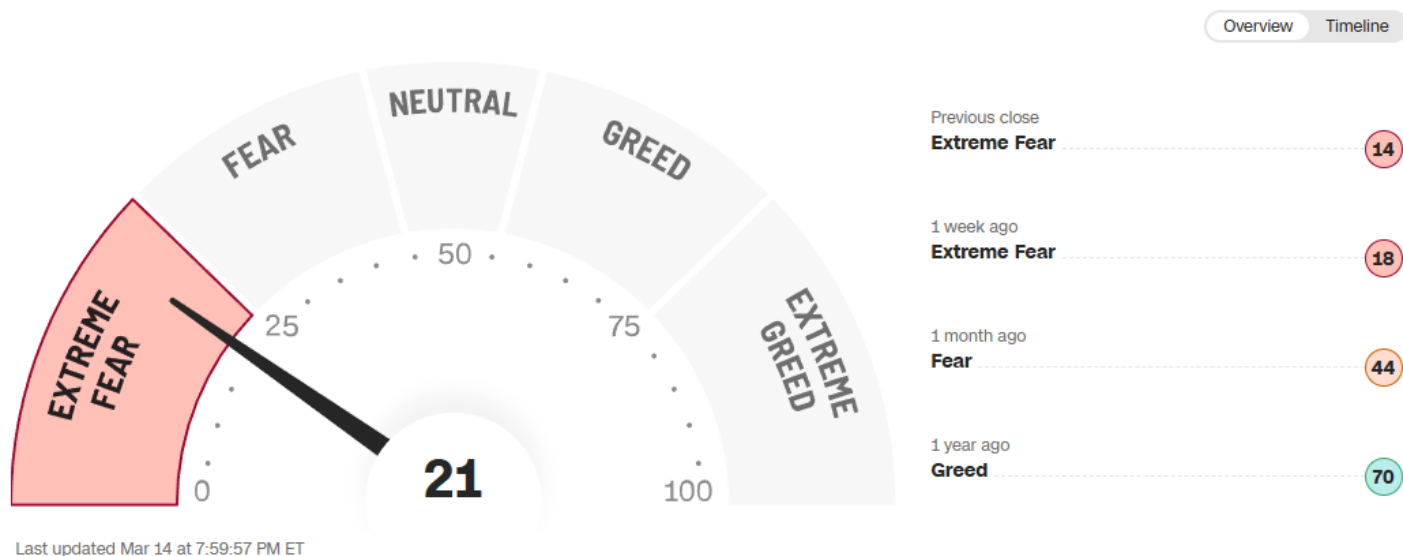
Calendar	GMT	Reference	Actual	Previous	Consensus	TEForecast
2025-02-12	01:30 PM	Jan	3%	2.9%	2.9%	2.9%
2025-03-12	12:30 PM	Feb	2.8%	3%	2.9%	2.9%
2025-04-10	12:30 PM	Mar		2.8%		2.5%
+						

Components	Last	Previous	Unit	Reference
Core Inflation Rate YoY	3.10	3.30	percent	Feb 2025
Energy Inflation	-0.20	1.00	Percent	Feb 2025
Food Inflation	2.60	2.50	percent	Feb 2025
Rent Inflation	4.20	4.40	percent	Feb 2025
Services Inflation	4.10	4.20	Percent	Feb 2025

Fear & Greed Index

What emotion is driving the market now?

[Learn more about the index](#)



North East West South is **NEWS**

Elon Musk, founder of the U.S. Space Exploration Technologies Corporation (SpaceX), said that the SpaceX Starship rocket will travel to Mars at the end of 2026, carrying the Tesla humanoid robot Optimus. In addition, humans can land on Mars "as early as 2029."

U.S. Secretary of State Marco Rubio expressed "cautious optimism" about a ceasefire agreement between Russia and Ukraine and called on both sides to make concessions after a U.S. envoy met with Russian President Vladimir Putin.

The G7 foreign ministers' meeting held in Canada issued a joint statement reaffirming their unwavering support for Ukraine in defending its territorial integrity and right to survival, as well as freedom, sovereignty and independence.

In response to US President Trump's threat to impose a 200% tariff on EU alcoholic products, French Economy and Finance Minister Lombard said that the trade dispute between the US and Europe will enter an escalation phase.

Statistics from the U.S. Department of Labor indicate that the average selling price of a dozen Grade A large eggs in February was \$5.9, up 59% in a year. But in fact, they are generally sold for \$8 in mid-range supermarkets, with expensive varieties costing more than \$13. Some supermarkets limit each customer to buying a maximum of one or two boxes at a time. Some local residents joked that they might need to use stones instead of eggs this year, and some businesses took the opportunity to sell plastic eggs.



World Observation

Day 1118
Russia/Ukraine Conflict

European Union 2.0

(6) Real President

Most European countries are using congressional system to elect their leader. That is the leader of the majority party in the congress is automatically acting as the prime minister of the country. While in America and Asia, they elect a person as a leader for a fixed period of time and is called president. Anyway, they are the highest leader of politics and military force. A Real President.

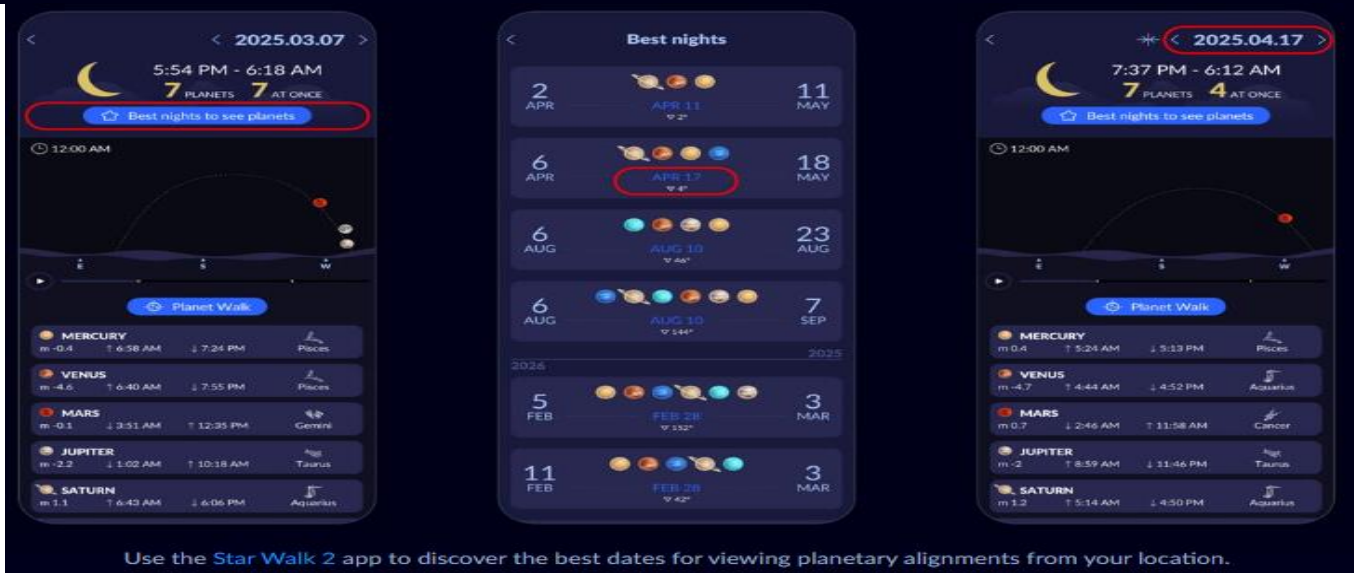
The leader of EU also bears the title of president, but just a fake president, for he has no military force under him. His actual function is just a general secretary or chairman, arranging meeting of leaders from different countries to meet at the assembly. He has no military power under him. All the forces are listening to the order of their supreme leader of the country and not EU. What EU now needs is a real president and not a general secretary.

The Eurozone is now successfully united a number of countries to use their single currency, but they do not have a combined military force under their supreme leader. So it is quite misleading to call him president, he should be called general secretary as in the United Nations. In the Mediterranean Sea refugee crisis, the Italian Navy is on duty to intercept the refugees; but their action was too strict and had shipwrecking every several months led to deaths of several hundreds, later they invited the British Royal Navy to be on duty and the scenario improved. Now they just want to form a navy, army and air force of the EU and thus under the order of the EU president. They would not be classified as from whatsoever country but only the EU. They will have routine patrol on the borderlines of EU on air, land and sea. Raising the EU flag only and people hard to tell which part is from which country.

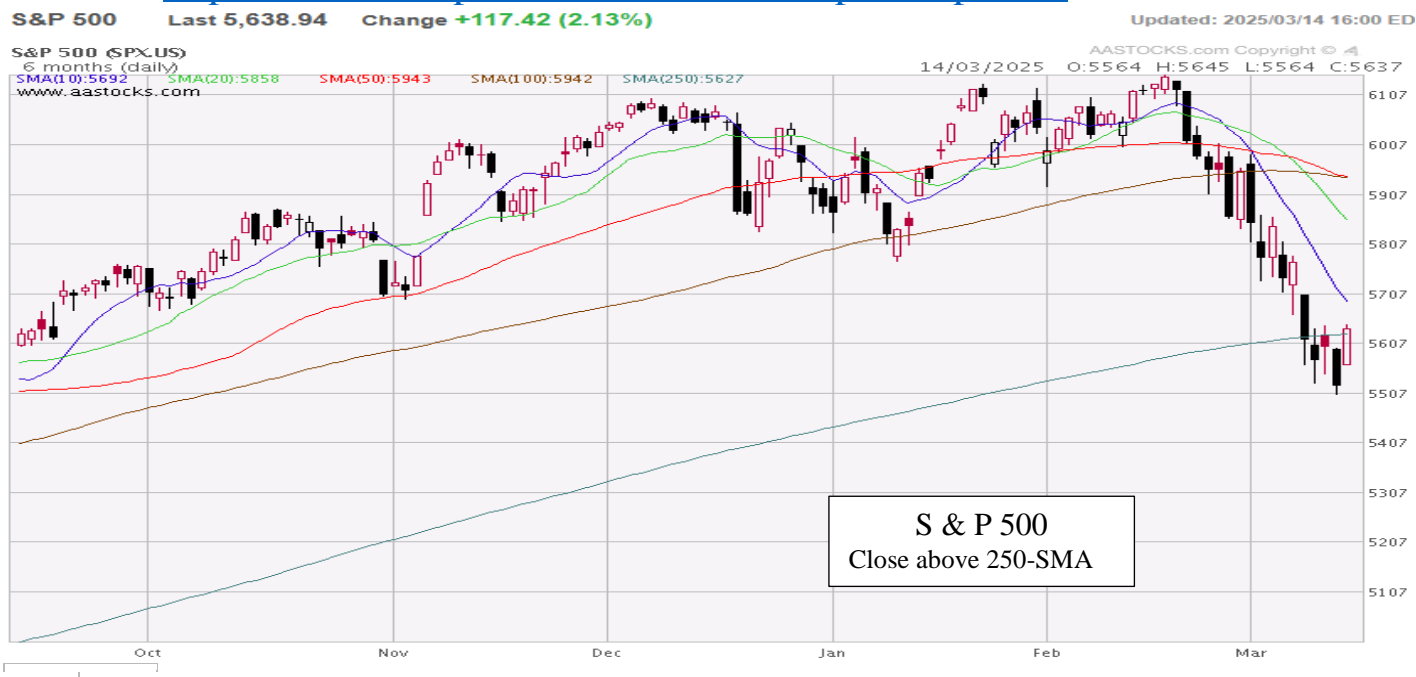
IF there is a military force patrolling the borderline of the US which is the back of Ukraine, the war would not happen and would not last 1118 days.

Here are the upcoming planetary alignments that will occur in 2025-2026:

- **April 17:** a small morning alignment of Neptune, Mercury, Saturn, and Venus.
- **August 10:** a large morning alignment of Mercury, Jupiter, Venus, Uranus, Neptune, and Saturn.
- **February 28, 2026:** a large evening alignment of Mercury, Venus, Neptune, Saturn, Uranus, and Jupiter.
- **April 18, 2026:** a small morning alignment of Saturn, Mars, Mercury, and Neptune.
- **May 12, 2026:** a mini evening alignment of Mercury, Jupiter, and Venus.
- **August 12, 2026:** a large morning alignment of Jupiter, Mercury, Mars, Uranus, Saturn, and Neptune.
- **November 14, 2026:** a small morning alignment of Mercury, Venus, Mars, and Jupiter.



<https://starwalk.space/en/news/what-is-planet-parade>



本週重要數據

Weekly Important indicators

Date 日期	Day 星期	HK Time 時間	Star 重要性	Place 地區	Indicator	數據	Previous 前值	Expected 預期
17/3	(一)Mo	20:30	☆☆☆	US 美國	Core Retail Sales	核心零售銷售	0.3%	0.4%
17/3	(一)Mo	20:30	☆☆☆	US 美國	New York Mfg Index	紐約製造業指數	1.9	5.7
17/3	(一)Mo	20:30	☆☆☆	US 美國	Retail Sales	零售銷售	+0.3%	+0.2%
17/3	(一)Mo	22:00	☆☆☆	US 美國	Business Inventory	企業庫存	0.3%	0.2%
17/3	(一)Mo	22:00	☆☆☆	US 美國	NABH Index	NABH 市場指數	42	42
17/3	(一)Mo	22:00	☆☆☆	US 美國	Retail Sales	零售銷售	0.4%	0.1%
18/3	(二)Tue	21:15	☆☆☆	US 美國	Construction Permit	建屋許可	1.450M	1.473M
18/3	(二)Tue	21:15	☆☆	US 美國	Production Capacity	新屋動工	1.380M	1.366M
18/3	(二)Tue	22:00	☆☆☆	US 美國	Red Book	紅皮書	5.7%	5.7%
18/3	(二)Tue	22:00	☆☆☆	US 美國	Capacity Utilization	產能利用率	77.8%	77.8%
18/3	(二)Tue	22:00	☆☆☆	US 美國	Industrial Production	工業生產	0.2%	0.5%
19/3	(三)Wed	18:00	☆☆	EU 歐盟	CPI	通漲率	2.6%	2.7%
19/3	(三)Wed	19:00	☆☆	US 美國	MBA Mortgage	MBA 抵押貸款	+55.4%	+56.4%
19/3	(三)Wed	20:30	☆☆☆	US 美國	EIA Oil Inventory	EIA 原油庫存	+7664kb	+5680kb
19/3	(三)Wed	26:30	☆☆☆☆☆	US 美國	Fed Rate Decision	聯儲議息	4.50	4.50/
20/3	(四)Thu	20:30	☆☆☆	US 美國	Current Account	經常賬餘額	-331.0B	-310.9B
20/3	(四)Thu	20:30	☆☆☆	US 美國	Philadelphia Survey	費城調查指數	9.4	18.1
20/3	(四)Thu	20:30	☆☆☆☆	US 美國	Initial Claims	初領救濟金人數	220K	225K
20/3	(四)Thu	20:30	☆☆☆☆	US 美國	Continuous Claims	續領救濟金人數	1,870K	1,880K
20/3	(四)Thu	22:00	☆☆☆	US 美國	Leading Indicator	領先指標	-0.2%	-0.3%
20/3	(四)Thu	22:30	☆☆	US 美國	EIA Natural Gas	EIA 天然氣	-48bcf	+45bcf
21/3	(五)Fri	18:00	☆☆☆	EU 歐盟	EU Summit	歐盟峰會	/	/





Market Observation

Philadelphia
Semiconductor Index

4,598.8

+145.6 (+3.27%)

New Page Unfolded by Planets

King Donald swore in office at 12:00 on Jan 20th which is just a half working day. After the inauguration ceremony there is a luncheon in Capitol Hill, bidding farewell to former president, and walked through the Pennsylvania Avenue back to White House as tradition needs. His first full working day was on Jan 21st which is a 6 Planetary Alignment, a new scenario started. He quarreled with Zelensky in Oval office on Feb 28th which is a 7 Planetary Alignment, a lot of comments said US started to give up the universal value established after the World War II. King Donald gave up justice, fighting against dictatorship and turned his attitude to follow the money only. Monetary value is above universal value.

In the beginning of the year, the writer forecasted the highest point of S&P is 6,600 which is 10% higher than previous year where a lot of analyst did so, some even aimed at 7,000. How about the lowest point, 5,500 which was just reached. Most of the time, the US stock is running above the 250-SMA. Of course sometimes were lower such as the pandemic of 2020, but the time would not be so long.

In the last century, US market was accustomed to use 200-SMA and Asian market 250-SMA. It is quite simple that there are 52 weeks in a year, when cutting off market holidays it is 50 days, when times 5 is 250. No need to say the 250 SMA is more logical and should use to stand for year line rather than 200 SMA. Even some uses WMA, it's no problem, should be 250 more logical than 200 as year line.

As a rule, when a drop comes, some people would like to wait for a lower point in order to buy at low, but according to experience, normally US stocks rebounded faster than expected. For money comes from every country of the world. When US stands for justice, it is. But when US gave up their universal value, some money would go to EU, Japan or gold market instead of US Dollar. So whether the market will reach bottom at 250-SMA does not depend on technical analysis, it depends on the concept of King Donald. Whether he would just follow the money or universal value, whether he would treat the EU and G7 as an enemy or partners. Anyway, it is not easy to catch the bottom at a specific point, if you want to buy at the bottom, the best way is to buy continuously for 6 months for the market is going to form an Ursa Minor Pattern as what are you going to see in the sky.